
Topic : **Setting Up a Cache-A to Mount a Facilis SAN**

Reference Release: **v3.2.4**

Date : **December 2013**

Summary:

It is normally not possible to use the Cache-A Mount Manager function to mount Facilis volumes on Cache-A devices. This situation can be overcome by installing the Facilis Linux client software on the Cache-A as described in this tech brief.

Any Cache-A archive appliance running under the CentOS Linux operating system (Cache-A software version 3.0 or later) can be configured as a TerraBlock client, and TerraBlock volumes can be accessed through the Cache-A client browser. This workflow is only supported with TerraBlock Multi-user Write volumes on TerraBlock version 5.5.1 and higher.

For proper operation of TerraBlock Manager and Multi-user Write volumes on Linux clients, consult the TerraBlock User Guide.

When these steps have been completed, the identified Facilis mount points will be accessible from the Cache-A Mount Manager page and when so mounted, appear in the View : dropdown menu of the Source Directory list.

Procedure:

This procedure requires that you have some familiarity with command line in Linux and have a copy of the Facilis support software on a USB drive.

1. Connect mouse monitor and keyboard to Cache-A, login as **root**, password **cache123**
2. Connect the Facilis supplied thumb drive to Cache-A's USB port. Pull the *Linux Facilis* folder out of the zip file on the thumb drive and put in the /root/ home folder on the Cache-A
NOTE: Make sure that your version of Linux Terrablock Manager matches your server version. If you don't have a copy or can't find it at Facilis Support page then contact Facilis Support and they will provide the correct version.
3. Navigate to Facilis folder in /root/
4. Run the launch.sh script and then double click on the Terrablock manager icon.

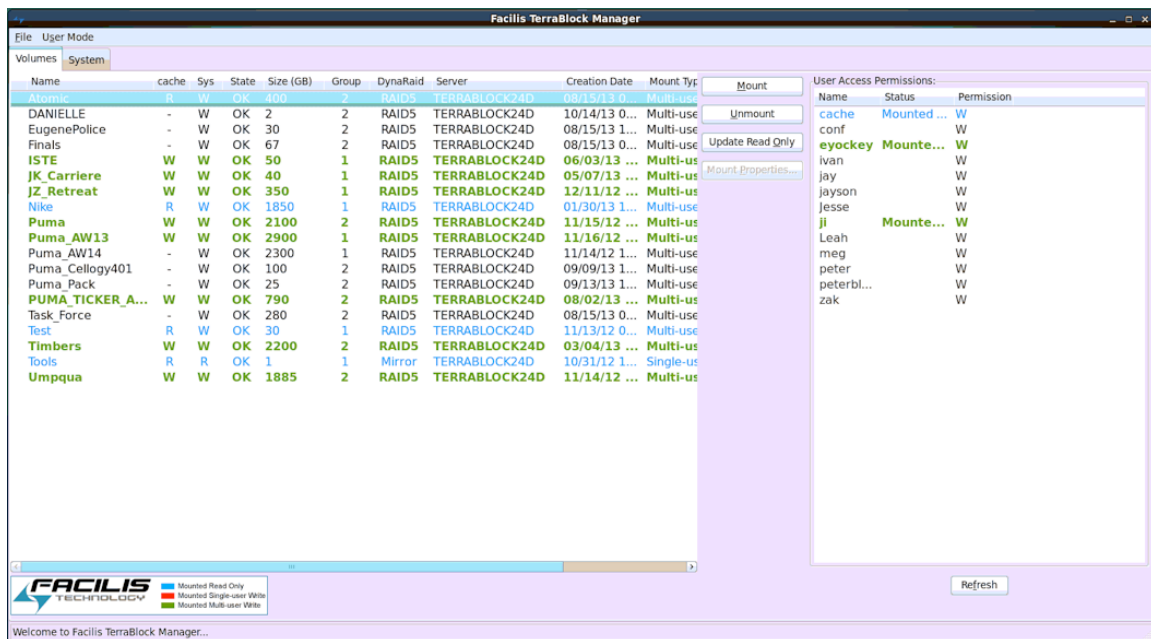
5. Set up the Terrablock Manager using the following setting instructions:
 - User Mode
 - Check File System Emulation Mode
 - Check Unmount all volumes on exit
 - File -> Network Configuration
 - Check Enable Network Configuration
 - Enter correct port number if its not there.
 - Enter your correct Server Name or IP Address
6. On the Terrablock Manager Admin setup (run from a machine you can set user permissions, sometimes it's the server machine itself) make sure that the Cache-A has write permissions for all of the volumes you want it to have access to. This will probably show up with the username: `root`
NOTE: The user needs to have access to the Tools volume or won't be able to mount anything.
7. Go back to the Terrablock manager running on the Cache-A, click refresh, Mount the volumes you want with the user `root` making sure they are all write permission
8. Create symbolic links to the Facilis Multi-user Write volumes you want to mount from the **/media** directory linked to the **/mnt/network** directory for each mount point you want to appear in the Cache-A Mount Manager
The command to create this link is below.

```
ln -s /media/<volume name> /mnt/network/<volume name>
```

Do this for each volume mounted to the Cache-A device that is required as a source for archive.

Tips:

Any mount points so created will be temporary and disappear after rebooting. After each reboot you will need to launch the TerraBlock Manager on the Cache-A again and reselect any desired volumes (steps 7 and 9). The links you made in step 8 will remain and do not need to be recreated unless the volume names have changed.



Facilis TerraBlock Mount Manager

If you reorganize folders and files, etc. on a TerraBlock volume that is still mounted to the Cache-A, BEFORE ARCHIVING, unmount that volume from the Cache-A (through the Cache-A Linux Terrablock Manager NOT through the web interface) then remount as Write. This will guarantee that the Cache-A sees all of the changes that have been made to that Volume.